

# Right Above It

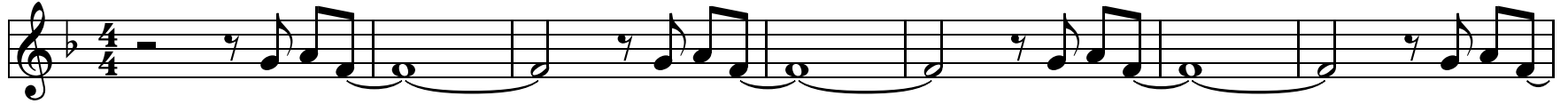
Sound of the Hive Edition

Arr. J. Teal

$\text{♩} = 120$

Flute

8



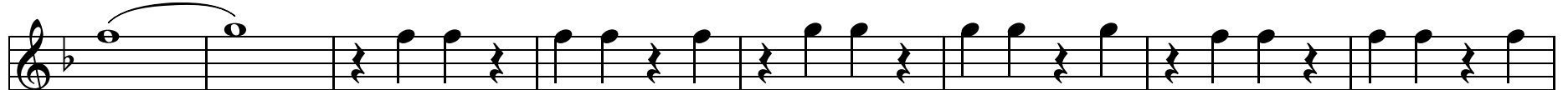
15



24



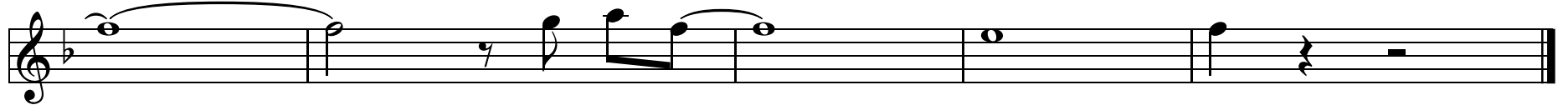
32



40



46



# Right Above It

Sound of the Hive Edition

Arr. J. Teal

Clarinet

♩ = 120

8

15

24

32

40

46

# Right Above It

Sound of the Hive Edition

Arr. J. Teal

Alto Sax

♩ = 120

8

15

24

32

40

46

# Right Above It

Sound of the Hive Edition

Arr. J. Teal

Trumpet

♩ = 120

8

15

24

32

40

46

The image shows a trumpet score for the piece 'Right Above It' in the 'Sound of the Hive Edition' by J. Teal. The score is written in treble clef with a key signature of one sharp (F#) and a 4/4 time signature. The tempo is marked as quarter note = 120. The score consists of seven staves of music. The first staff starts at measure 8 and contains a melodic line with eighth and quarter notes. The second staff starts at measure 15 and continues the melody. The third staff starts at measure 24 and features a more rhythmic pattern with eighth notes and rests. The fourth staff starts at measure 32 and includes a long note with a slur. The fifth staff starts at measure 40 and continues the melodic line. The sixth staff starts at measure 46 and features a melodic line with eighth notes. The seventh staff concludes the piece with a final melodic phrase and a double bar line.

# Right Above It

Sound of the Hive Edition

Arr. J. Teal

♩=120

Low Brass

8

18

28

36

44

# Right Above It

Sound of the Hive Edition

Arr. J. Teal

♩ = 120

Tuba

8

18

23

29

38

45